

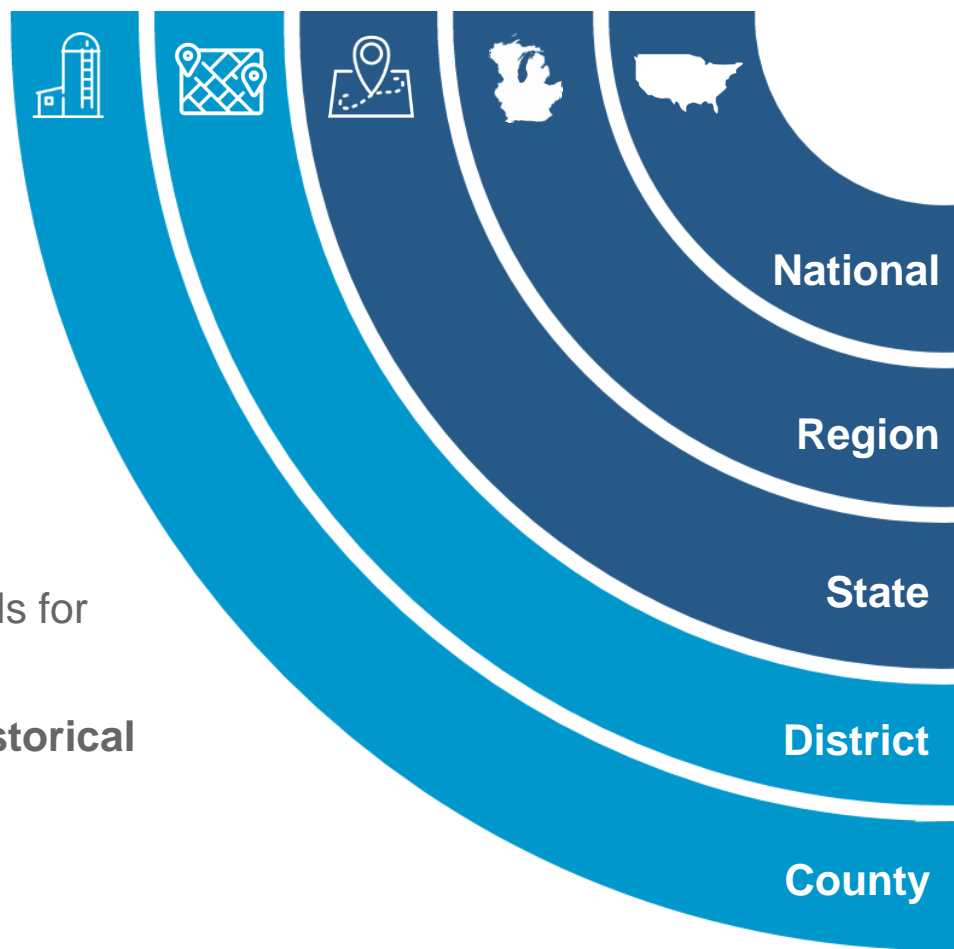
OTC Grain Price Indexes & Assessments

Smart, transparent, and accurate price assessments for Corn, Soybeans, and Wheat - to power decisions for physical grain professionals



Grain benchmarks that aren't just average...

Our assessment methodology uses a sophisticated - but transparent - weighting process to ensure our prices are objective and reflective of underlying market economics. By combining price with capacity and throughput, cmdtyIndexesSM is the only source for grain pricing that isn't just "average."

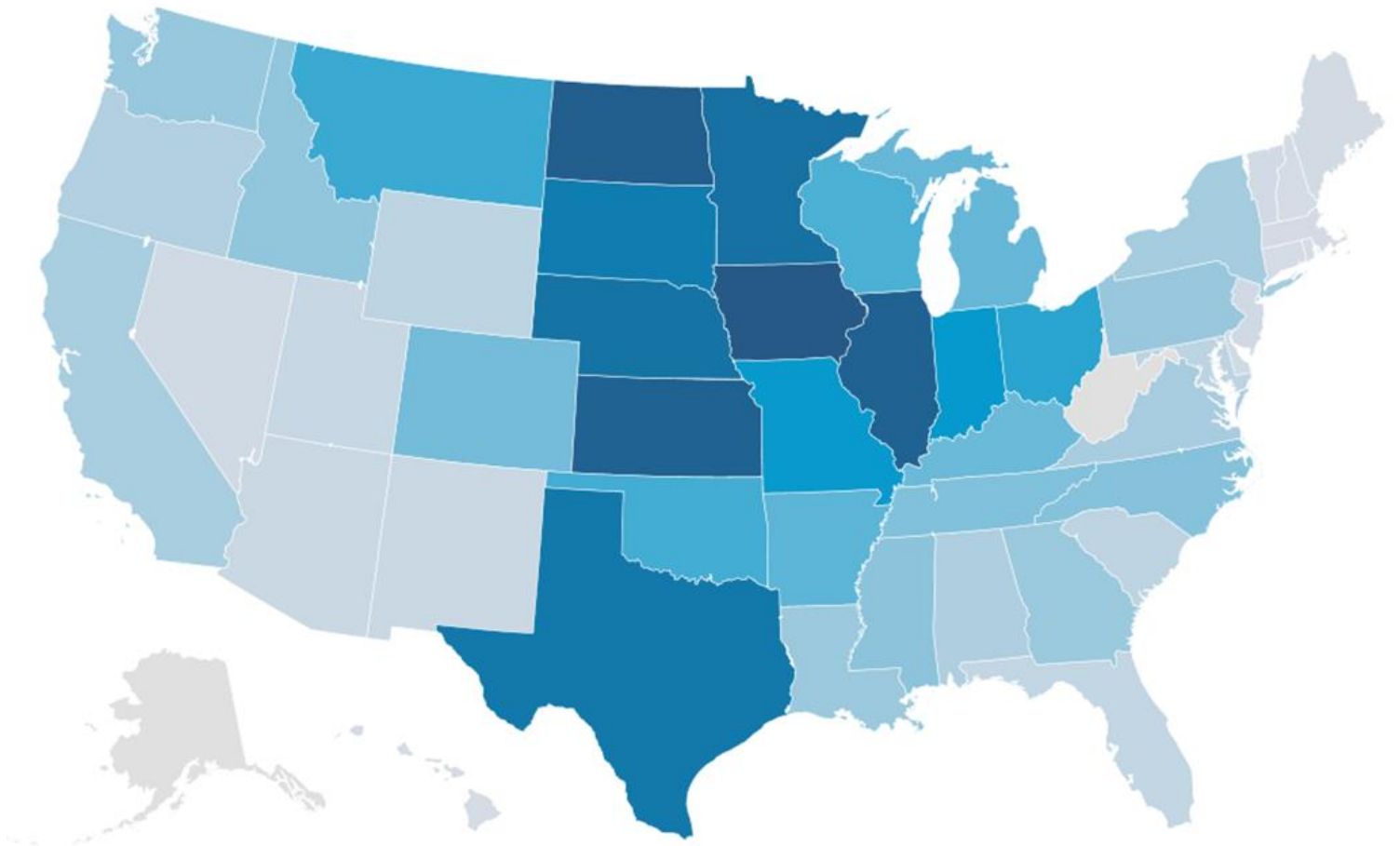


Coverage

We calculate continuous and end-of-day price and basis levels for individual Counties up to our benchmark National Index – **historical data is available from 2014**



Powered by best-in-class alternative data



4,000+ Grain Buying
Locations

Use our independent data to power your business processes

End-of-Day Price Assessments

Drive your front and back office with reliable and unbiased data from cmdtyIndexes.

Independent end-of-day pricing allows users to analyze historical trade performance, and spot opportunities with new potential counterparties.

Our real-time assessments can power your front-end analytics and trading applications to ensure that the price you're buying or selling at is the true market price.

Available over API or through the cmdtyView[®] terminal - integrate this data into your workflow today.

Continuous Price Assessments

Objective Fair Value Information

cmdtyIndexesSM ability to provide your firm with fair value information on physical grain prices ensures that your execution agents are working to get the best price.

Benchmark your prices to our objective and transparent methodology today.

Who should subscribe?



Grain
Traders

01100
10110
11110

Props &
Hedge Funds



Risk
Managers



Trading
Platforms



Media
Firms



Mid & Back
Office

The cmdtyIndexesSM Grain Price Index series is a clean and unique **alternative dataset** – with rich historical data that is also available for real-time streaming into your trading strategy

How can I get the data?

APIs



cmdtyIndexes are easily integrated into your application, website, or workflow through our flexible delivery methods.

Streaming
& Real-Time



cmdtyView[®]



Whether you subscribe through our APIs, our high-performance streaming feeds, or cmdtyView[®], we have a solution that can meet the needs of your firm.

Ask us about our responsive, and accessible **Digital Solutions** for your media property today.

Why cmdty Data Solutions?

cmdty Data Solutions are flexibly designed to power solutions from front to back office. Whatever your requirements, cmdty can deliver a data solution to meet your needs.

Our high performance data services cover all of the alternative and proprietary data products – and are available over APIs, low-latency Streaming Feeds, or Historical & End of Day delivery methods.

Ask about our flagship cmdtyView[®] data platform which includes all of cmdty's proprietary Indexes and our branded Newswires. It's the only front-end application you'll ever need.

Data

Indexes

Trading

Newswires



Data Solutions Built for Commodity Professionals

cmdty delivers the data, solutions, and insights that commodity professionals need to drive their business.

Our offerings are built for the most demanding of users - and are designed to be Smart, Transparent, and easily integrated into any client solution.

Contact us at cmdty@barchart.com
or visit us at cmdtydata.com

CME GROUP MARKET DATA IS USED UNDER LICENSE AS A SOURCE OF INFORMATION FOR CERTAIN BARCHART PRODUCTS. CME GROUP HAS NO OTHER CONNECTION TO BARCHART PRODUCTS AND SERVICES AND DOES NOT SPONSOR, ENDORSE, RECOMMEND OR PROMOTE ANY BARCHART PRODUCTS OR SERVICES. CME GROUP HAS NO OBLIGATION OR LIABILITY IN CONNECTION WITH THE BARCHART PRODUCTS AND SERVICES. CME GROUP DOES NOT GUARANTEE THE ACCURACY AND/OR THE COMPLETENESS OF ANY MARKET DATA LICENSED TO BARCHART AND SHALL NOT HAVE ANY LIABILITY FOR ANY ERRORS, OMISSIONS, OR INTERRUPTIONS THEREIN. THERE ARE NO THIRD PARTY BENEFICIARIES OF ANY AGREEMENTS OR ARRANGEMENTS BETWEEN CME GROUP AND BARCHART.